

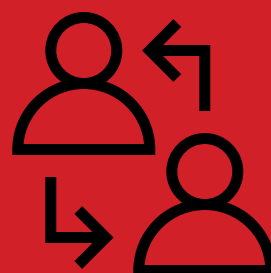
ASSESSMENT IN DISTANCE LEARNING



Tools and tips for assessment in the virtual junior classroom.

WHAT ENGAGEMENT "LOOKS LIKE"

Distance learning is a whole new journey for everyone. It is important to explain what your expectations are surrounding engagement, and that your students understand that their involvement in your lessons is important in not only creating community, but also in creating a better learning experience for themselves. Establish protocols surrounding work time, asking questions and participating in the lesson. Share your checklists and assessment tools with your learners.



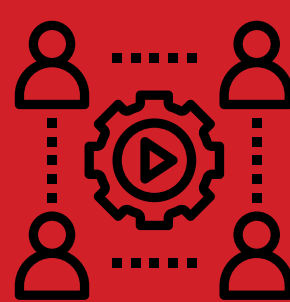
PLATFORM TOOLS FOR FORMATIVE ASSESSMENT



Keeping students engaged in learning and on-task during synchronous lessons is key to their success. Using tools within your synchronous platform is a great way to "check in" and assess in the moment. For example, you might use the reaction buttons in the chat or the participants areas, use the chat within the platform, or have students show a reaction on camera. Keeping anecdotal records of participation and understanding will inform individual feedback and next steps.

SHARING A COLLABORATIVE DOCUMENT

During or after a lesson, have students complete a quick write to share what they have learned in a collaborative document. This can be done using a variety of tools such as a Google document, Google Jamboard, Padlet or other sharing tool. This will enable you to catch misconceptions, confirm understanding and will enable students to learn from one-another. Providing students with small tasks, short timelines, and opportunities for accountable talk and active participation will prove efficient and engaging.



TOOLS FOR ASSESSMENT AS LEARNING

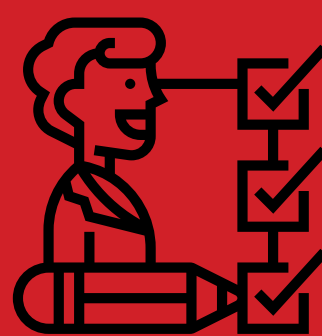


[Nearpod](#) is a great tool for you to have students follow instruction and provide immediate feedback and comprehension checks. Such tools give the educator a live snapshot of responses and keeps the lesson focused. Students also receive immediate feedback. You might also choose to use tools such as Google Forms, Socrative, or other online assessment platforms for a quick comprehension check.

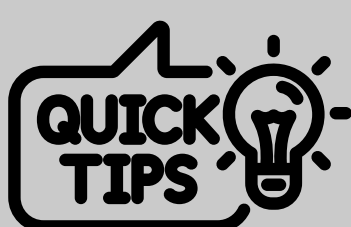
SUMMATIVE ASSESSMENT

When deciding on tasks for summative assessment, try to provide open-ended tasks that have multiple points of entry. Allow students to show their learning using different tools and products. This universal design will support success for all learners.

Involve students in the co-creation of success criteria. Share assessment tools when assigning the task. Conferencing with students will enable you to assess understanding, authenticity and provide immediate feedback.



GENERAL TIPS



- Keep tasks short and check in frequently. For longer assignments, chunk the work.
- Visually and orally share learning goals and timelines with students so that it is clear what they are expected to accomplish in a session.
- Communicate with students where feedback will be given and decide how to review practice work. There is insufficient time to review all work that is posted. Have students engage in self-monitoring and metacognition. This is valuable feedback for next steps.
- Share class codes and important dates with families.
- Use thinking routines to enable students to communicate learning. [Thinking Pathways](#) have great resources to support using these routines.

VISION: EMPOWERING ALL LEARNERS TO ACHIEVE PERSONAL EXCELLENCE.

MISSION: TOGETHER, WE INSPIRE INNOVATION AND A PASSION FOR LEARNING.